



LEADCNC

Serial No: 1

Name:VersaFrame CNC machining center with laser

## Product Information

Model: UX260



### **UW200 – A high performance Laser-Equipped Cutting and Milling Machining Center.**

Designed for Milling, Drilling, Cutting, and Laser Machining operations on the heads and ends of aluminum and light alloy profiles.

#### **Automatic Loading and Feeding System:**

Linear Direct Drive Motor Technology.

#### **Multi-Functional Machining Modules:**

##### **Milling Module:**

The 4-axis CNC milling module is equipped with four electric spindles, allowing simultaneous machining on multiple surfaces of the profile without requiring reorientation. This greatly enhances efficiency and precision.

##### **Cutting Module:**

The primary cutting module includes a 600 mm diameter saw blade with three-axis CNC-controlled downward movement. The cutting module can operate in synchronization with the milling module, enabling simultaneous cutting and machining for maximum productivity.

##### **Laser Processing:**

The UW200 features two high-precision laser units, designed for marking and assisting in milling operations, substantially increasing processing speed.



LEADCNC

Serial No: 1

Name: VersaFrame CNC machining center with laser

Model: UX260

## Product Information

### **End Milling Function (Optional):**

A modular horizontal cutting and end milling unit can be added based on customer needs. This module includes a single-head cutting unit with CNC-controlled horizontal feed, a 350 mm saw blade, and a  $\pm 90^\circ$  cutting range. All cutting angles are fully automated and managed by a 3-axis CNC system. The horizontal feed allows processing larger profiles and performing specialized cuts.

### **Automatic Unloading System:**

The UW200 includes an automatic unloading mechanism that transfers finished profile segments from the cutting unit to the unloading magazine. The transverse belt magazine supports profiles up to 4000 mm in length (customized for longer profiles).

### **Fully Enclosed Central Cabinet:**

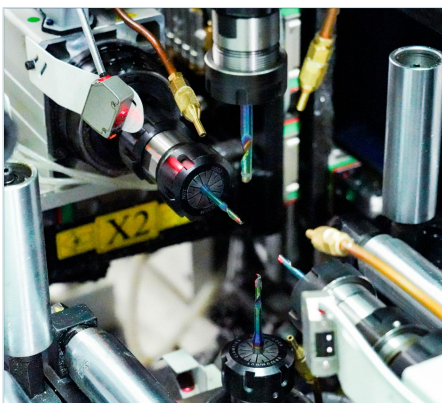
All working units are enclosed within the central cabinet, ensuring high standards of soundproofing and comprehensive operator safety.

### **Automatic Labeling:**

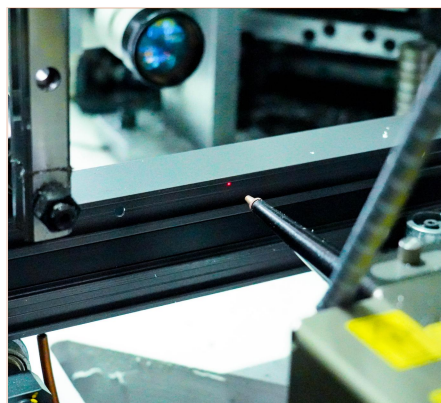
Equipped with a servo motor-driven automatic labeling system, UW200 minimizes manual intervention and maximizes operational efficiency.

### **Smart Integration and High Efficiency:**

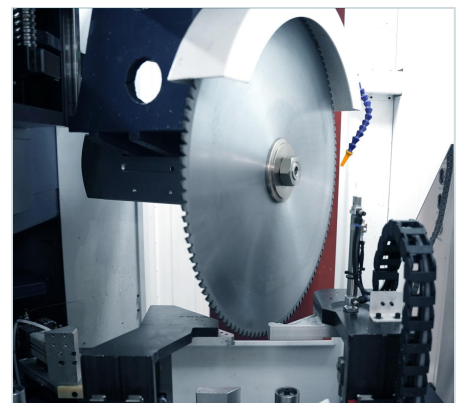
The UW200 enables the simultaneous operation of its four spindles and cutting processes, drastically reducing machining time. The integration of laser and mechanical machining modules achieves levels of speed and precision unattainable by traditional equipment.



Four Electric Spindles



Laser Unit



Cutting Unit



LEADCNC

Serial No:1

Name: VersaFrame CNC machining center with laser

Model: UX260

## Product Specification

Machining Specifications	Parameter Value
Max. Profile Cross-Section	W*H = 190 × 260 mm
Min. Profile Cross-Section (depending on gripper position)	W*H = 30 × 20 mm
Raw profile length	L=600 – 7,000 mm
Finished part length	L=300 – 7,000mm
Feed Magazine	Parameter Value
Number of swing arms	4
Mounting positions	7
Infeed	Parameter Value
Drive	Linear
Motorized gripper adjustment	Y/Z
Gripper rotation	Standard
Residual piece measurement	Optional
Residual piece processing	Fully automatic
Machining Station	Parameter Value
Axes	5
Router spindles	4 (servo-assisted)
Laser	2 (1.5KW cutting and 0.03KW engraving)

**LEADCNC Machinery Co., Ltd**

[www.leadcnc.com](http://www.leadcnc.com)

The right to make technical alterations is reserved.



LEADCNC

Serial No: 1

Name:VersaFrame CNC machining center with laser

# Product Specification

Model: UX260

Saw	Parameter Value
Axes	3
Saw blades (diameter)	1*600mm optional
Sawing angles	40° - 140°
Notching	Optional
Outfeed clamping carriages	Parameter Value
Axis	1
Cycle operation(short parts)Laser	Optional
Gripper rotation	Standard
Outfeed conveyor	Parameter Value
Lifting station	YES
Outfeed conveyor width	4,000 mm (can be extended)
General Parameters	Parameter Value
Power supply	400V/50Hz
Rated Power /Power	25kw/39kw
Pressure	0.5~0.8Mpa
Gas consumption	300L/min
Weight	10,000kg
Overall dimensions	<b>18,000×6,500×2,500mm</b> (including workbenches on both sides)

**LEADCNC Machinery Co., Ltd**

[www.leadcnc.com](http://www.leadcnc.com)

The right to make technical alterations is reserved.